

NOTES:

1. ATTACH GROUND STRAP TO HOUSING WITH PC 325 SCREW.
2. NO KNOCKOUTS REMOVED.
3. COIL LEADS INSIDE CONDUIT BOX AFTER TESTING AND SECURE COVER.
4. LOCATION OF IMPELLER TO BE .415/.335 FROM EDGE OF IMPELLER TO INSIDE OF HOUSING SHELL.
5. PACK 1 PER CONTAINER, 120 MAX. PER PALLET, PACKING ASSY.: 87854707, 30 CONTAINERS PER LAYER, 4 LAYERS PER PALLET, P.S. 88834200 AND P.S. 88834408.
6. CARTON LABELS MUST ALL FACE ONE DIRECTION TOWARD THE OPEN END OF THE PALLET. SEE P.S. 88834408.
7. NO PACKAGING TAPE OVER CARTON LABEL.

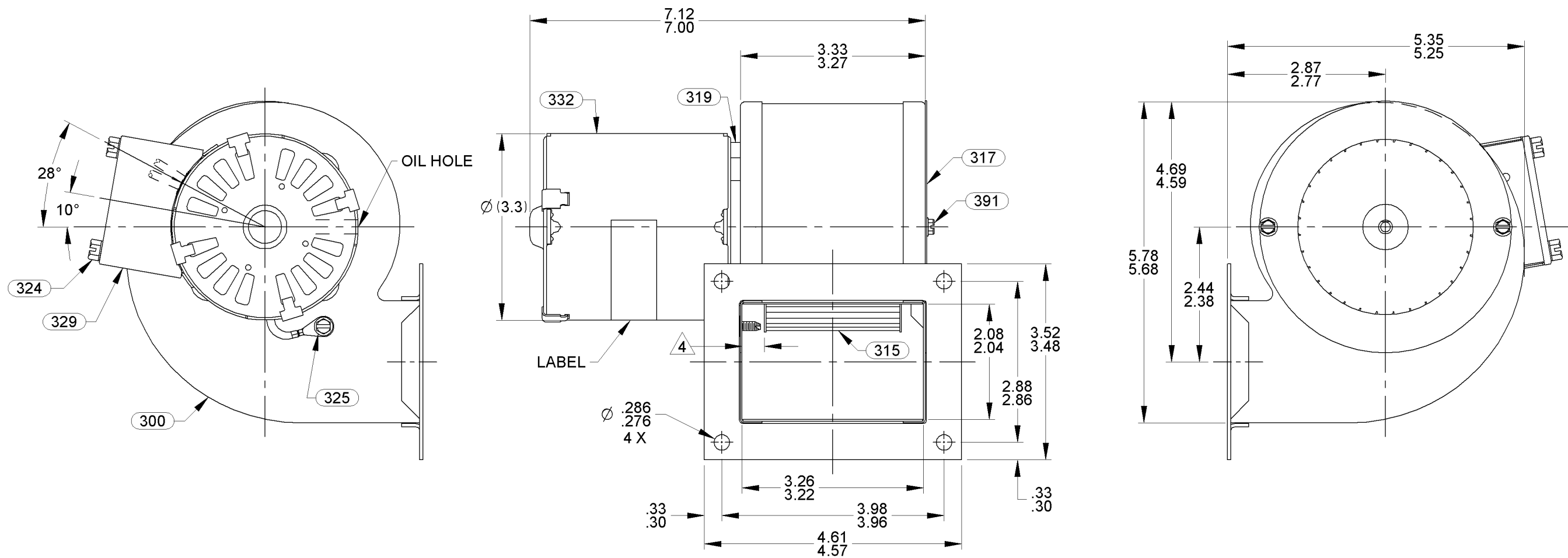
APPLICATION GEN. REPLACEMENT

THERMALLY PROTECTED CLASS "B" INSULATION

B	LA	FR	A	S	C	E	B	A
23	21	30	V	06	OA	5	1	0
CUSTOMER							FASCO DIST.	
CUSTOMER PART NO.							A166	

LEAD MATERIAL
 18 GA. 125°C 2/64 INSUL.
 X-LINKED POLY. (2) BLACK
 8.00/6.00 IN. LONG
 .68/.56 IN. STRIP

GROUND LEAD MATERIAL
 18 GA. 105°C 2/64 INSUL.
 THERMO. GRN/YEL
 4.25/3.25 IN. LONG
 RING TERM. 89020156
 AMP 61794-1



TYPICAL PERFORMANCE TEST DATA IN FREE AIR

ECO. NO.	REV.	DATE	APPROVAL	AT 115 VOLTS 60 HZ.			APPROVALS	DATE
				R.P.M.	WATTS	AMPS		
4001130	05	02/17/11	MLM/KSA	3150	106	1.45	DRAWN PLA	07/19/2005
4009550	06	6/24/2013	MLS/SED				CHECKED BGP	07/19/2005
				BLOWER WEIGHT LBS.		END PLAY .050/.010	FINISH COLOR BLACK	

UNLESS OTHERWISE SPECIFIED DIMENSIONS ARE IN INCHES TOLERANCES ARE:
 FRACTIONS ± 1/16 DECIMALS XX ± .01 ANGLES ± 1°
 XXX ± .005

FASCO FASCO MOTORS GROUP
 AC MOTOR/BLOWER DIVISION

CONFIDENTIAL: DO NOT DUPLICATE OR DISCLOSE TO THIRD PARTIES WITHOUT WRITTEN PERMISSION OF FASCO MOTORS GROUP, AC MOTOR/BLOWER DIVISION.

TITLE
BLOWER ASSEMBLY

SIZE **B** DWG. NO. 7021 11307 REV. 06

DO NOT SCALE DRAWING SHEET 1 OF 1